

Looking at Locking



Spring 2025

Welcome to Locking Parish Newsletter



VIEW FROM THE CHAIR . . .

Welcome to our Spring Edition of 'Looking at Locking'. I hope you find this edition interesting and informative. My thanks to the Parish Editorial Team Dawn, Kelly and all those who have contributed to the making of this edition of 'Looking at Locking'.

I am pleased to say that our Book Exchange and Pop-up Cafe is being held on Tuesdays between 10am and 12pm in our newly refurbished meeting room - The Nurse Thomas Suite. The Parish Hall and Nurse Thomas Suite are available for hire, details of prices and availability can be found on our website www.lockingpc.co.uk or by emailing LPC.Admin@lockingparishcouncil.co.uk

We have been very busy recently installing a 'Tiny Forest' and 10 Native Standard Trees at the Old Banwell Road Playing Field. A big thank you to North Somerset Council, Earthwatch and the many volunteers especially the pupils from Locking Primary School and the Winterstoke Hundred Academy at Locking Parklands who helped to make the planting of the trees possible.

I am very pleased to state that The Spinney, a path which links Locking Village to the A371 and Locking Parklands, has been upgraded and all works completed. This important route has been resurfaced with low level lighting installed. It is now a safe, well-lit path for all users.

Currently there are 12 Councillors on the Parish Council with 3 vacancies. If you have time to give and want to be involved in making a difference in our community, please contact the Clerk for further information on how to be a Parish Councillor.

Councillor Paul Jones
Chairman



BECOME A PARISH COUNCILLOR



MAKE A CHANGE

If you are passionate about where you live and want to make a difference then join Locking Parish Council.

By becoming a parish councillor you become someone your community will look to for help, guidance and support - a community leader with the power to influence decisions for the benefit of the people you serve. Seeing your community change for the better, as a result of decisions you have helped make, is something that can give you a sense of achievement and pride.

To find out more email

clerk@lockingparishcouncil.co.uk

LOCKING PARISH COUNCIL MEETING DATES FOR 2025

Unless otherwise stated the Full Council meet the 1st Thursday of the month and Committees meet on the 3rd Thursday of the month, most meetings start at 7.30pm. Meetings are normally held at Locking Parish Hall but occasionally they have been held at The Radio Wing and Oaktree Park Community Hall – location details will be on the meeting Agenda.

Members of the public are very welcome to attend. Please check our notice boards and website www.lockingpc.co.uk under Agenda & Minutes for further details.

Date	Mouth	Year	Meeting
20th	March	2025	Finance & Human Resources
20th	March	2025	Assets & Amenities Committee
3rd	April	2025	Council
17th	April	2025	Assets & Amenities Committee
24th	April	2025	Annual Parish Assembly

COMMUNITY DEFIBRILLATOR AND BLEED KIT



The defibrillator (also known as an Automated External Defibrillator or AED) **and Bleed Kit to stop blood loss are located in secure boxes by the entrance to Locking Parish Hall, BS24 8AR**

What3Words: retrieves. Packets. host.

The AED and Bleed Kit is available for use 24/7 to anyone in the vicinity who requires it, meaning that more people benefit from the presence of this device and lives could be saved.

When you dial 999 the Ambulance Call Handler will ask a series of questions and should your patient require it, they will identify the nearest available defibrillator or bleed kit to you, and give you access details.

HALL HIRE

The main hall and Nurse Thomas Suite availability and enquiries can now be made via our website: www.lockingpc.co.uk. You can also find booking forms, terms and conditions and FAQs. You are very welcome to view the venue, please email LPC.Admin@lockingparishcouncil.co.uk to make an appointment.

Parish Hall



Nurse Thomas Suite



Facilities Include:	Suitable for the following occasions:
<ul style="list-style-type: none">★ Performance stage★ Spot lights & disco ball★ Sound system (<i>blue tooth enabled</i>) and microphone★ Induction loop★ Kitchen (fully equipped)★ Disabled toilet and baby changing facilities★ Wheelchair Access★ WIFI★ Parking★ Access to adjacent play park	<ul style="list-style-type: none">❖ Christenings/Blessings❖ Children's parties (<i>with or without a bouncy castle</i>)❖ Weddings/Anniversaries/ Wakes❖ Pantomimes and Christmas parties❖ Musical Concerts, band or choir practice❖ School Events❖ Societies/Clubs❖ Training/Corporate events❖ Fitness Groups/Yoga/Karate❖ Dance Classes❖ Baby/Toddler groups



Locking Parish Council

☎ 01934 820786

✉ clerk@lockingparishcouncil.co.uk

📍 The Parish Hall, Grenville Avenue,
Locking, North Somerset BS24 8AR

Locking Parish Hall – Scale of Hire Charges 1 April 2024 – 31 March 2025

Meetings/Charitable Organisations	Parish	Non-Parish	Apply Code at checkout
Adult Rate		£18.37	Apply code: M/CONon-Parish
Youth U14 Rate		£6.82	Apply code: M/CU14Non-Parish
Adult Rate	£10.12		Apply code: M/CO-Parish
Youth U14 Rate	£4.73		Apply code: M/CO(U14)Parish

Parties/Dances etc.	Parish	Non-Parish	Apply Code at checkout
Adult Rate		£21.90	Apply code: P/D(Adult)Non-Parish
Youth U14 Rate		£14.74	Apply code: P/DU14Non-Parish
Adult Rate	£12.43		Apply code: P/DParish
Youth U14 Rate	£10.12		Apply code: P/DU14

Commercial Organisations	Parish	Non-Parish	Apply code at checkout
Adult Rate		£21.90	Apply code: COnonLP
Adult Rate	£12.43		Apply code: COLP

Nurse Thomas Suite Meeting Room, kitchen, toilet	£8.50 per hour
---	----------------

All prices quoted are **per hour** – setting up and clearing away **MUST** be taken into consideration when working out the time you wish to hire the hall from and until.

Please contact the Clerk should you wish to book the Main Hall and Nurse Thomas Suite together for your event.

Crockery Hire: Please contact the Clerk for details.



Piano

Locking Parish Council is thrilled to announce the restoration of the long-neglected hall piano, breathing new life into a potentially vibrant community asset.

The Council envisions the revitalized instrument serving as a source of joy and creative expression for all within the parish. By making the piano available to hall hirers, they hope to enrich a wide array of activities, from the soaring harmonies of choirs to music classes and the dramatic flair of theatrical productions.

Extending beyond formal bookings, the Council is pioneering informal lunchtime sessions on Thursdays from 12 noon to 2 pm. These drop-in sessions encourage individuals to share their musical talents and foster a sense of community, similar to spontaneous performances enjoyed at the Sovereign Centre.

Funding Locking Parish Council – The Precept.

While budgets are always challenging this Parish Council are keen to maintain the core services that benefit our community – meeting over several months a budget was finalised and presented to Full Council at the Parish Council meeting held on 9th January 2025.

The Parish Council approved a precept of £155,423. This equates to an increase of £2.62 per year for a Band D property.

The tax base is the number of properties that the council tax will be collected from.

For 2025-2026 this is calculated as follows:

Council tax base 1595.2 Band D properties

Therefore £155423 budget / 1595.2 properties = £97.43 per band D property this is an increase of 2.8% on the previous financial year 2024-25

What is the Parish Council Precept?

The **Parish Council Precept** is the primary source of income for your Parish Council. It is a local tax that forms part of your overall **Council Tax** bill. Each year, the Parish Council determines the funding it needs to deliver services, maintain community facilities, and support local projects. This amount is submitted to North Somerset Council, which includes it in the Council Tax charges for residents.

How is the Precept Calculated?

The Parish Council carefully reviews its budget requirements for the upcoming financial year, taking into account:

- Costs of running and maintaining local services, such as park, playing field, play equipment, allotments, parish hall and public spaces, dog and litter bins.
- Planned improvements or new projects.
- Contingency funds for unexpected expenses.

Once the total budget is agreed upon, this amount is divided by the Council Tax Base.

What is the Council Tax Base?

The **Council Tax Base** is the number of taxable households in the Parish, adjusted to account for factors like:

- Discounts (e.g. single-person households).
- Exemptions (e.g. certain properties like newly built empty homes, student accommodations and many more factors).
- Variations in Council Tax banding.

The result is a figure that represents the “effective number of properties” in the Parish for tax purposes. By dividing the total precept by the Council Tax Base, the Parish Council determines the amount each household will contribute.

Locking Parish Budget for the Financial Year 2025-26 can be viewed online at www.lockingpc.co.uk/finance

Locking Parish Council Small Grant Scheme

Locking Parish Council’s annual budget includes a sum of money for grant awards. The **Grant Awards Policy** has been drawn up to demonstrate a fair and transparent process and sets out the procedure the Council will follow when making its decision.

A grant is any payment made by the Council to an organisation for a specific purpose that will benefit the Parish, or residents of the Parish; and which is not directly controlled or administered by the Council. The Council awards grants, at its discretion, to organisations which can demonstrate a clear need for financial support to achieve an objective which will benefit the Parish by:

- Improving recreation and/or sports
- Enhancing the quality of life
- Promoting the Locking Parish in a positive way
- Providing a service
- Improving the environment

Locking Parish Council will not normally make grants to organisations outside of the Parish unless there are direct benefits to the Parish, or its residents. Applications should be made for ‘one-off grants’ that will not result in any recurring expenditure for the Parish Council.

For further details and a grant application form email
LPC.Admin@lockingparishcouncil.co.uk

Mendip Rise, Locking Village One-way System



Mendip Rise Locking

Persistent violations of the one-way system at Mendip Rise continue to be a concern, with reports of vehicles traveling against the designated flow of traffic. Despite the installation of markings and bollards by North Somerset Council in 2020, as a trial in response to Parish Council requests, the issue persists.

While the Parish Council initially felt the trial improved the situation, the subsequent removal of the bollards, due to maintenance issues and without prior consultation, has exacerbated the problem.

North Somerset Council has declined to implement a more permanent solution, citing the absence of an accident history and pedestrian traffic in that area, leading them to believe the violations are primarily due to local residents seeking convenient access.

Despite the existing Traffic Regulation Order (TRO) making such violations enforceable, the Parish Council suggests reporting incidents to the police via Avon and Somerset Police website and the North Somerset Council Road Safety Team via their website, urging residents to document the date, time, vehicle details, and, if safe, capture photographic or video evidence.

If you are unable to report these to the above then please forward the details along with any photos or video to LPC.Admin@lockingparishcouncil.co.uk



LOCKING COMMUNITY LIVING ROOM AND BOOK EXCHANGE

TUESDAYS 10AM TO 12 NOON

NURSE THOMAS SUITE, LOCKING PARISH HALL



**A RELAXED SPACE TO GET
TOGETHER, CHAT, ENJOY
FREE HOT DRINKS,
CAKE & BISCUITS AND USE
THE BOOK EXCHANGE**

EVERYONE IS WELCOME



**REPRESENTATIVES FROM NEIGHBOURHOOD POLICING, ALLIANCE HOMES AND WERN
OFTEN ATTEND ON TUESDAYS, KEEP AN EYE ON OUR FACEBOOK PAGE FOR UPDATES**

Community Orchard, Old Banwell Road Playing Field

The Community Orchard is continuing to thrive, despite vandals knocking down 2 trees, our Parish Orderly managed to get them back into the ground - we will have to wait and see if they have survived.

We were successful once again in being awarded funding from the Branching Out Fund to plant 8 fruit trees (Pear, Cherry, Plum, Mulberry and Chestnut) and we are very grateful to local residents who have donated a further 3 fruit trees.


Planting Day took place on 6th March with our planting hero's from Locking Primary School and Parish Councillors all doing a grand job.



Community Orchard

LOCKING ANNUAL PARISH ASSEMBLY
LOCKING PARISH HALL
Thursday April 24th 6.30pm

The Annual Parish Assembly is an opportunity for members of the public to learn what activities the various Organisations in Locking carry out during the year. It is also an opportunity to raise any issues with the Parish Council. Only Parishioners who are registered on the Electoral Roll can vote on any issues. Other members of the public can attend and speak but they cannot vote.





Come in and enjoy



Old Banwell Road Playing Field, Locking

Planted: December, 2024

What is a Tiny Forest?

A Tiny Forest is a dense, fast-growing native woodland, about the size of a tennis court. The forests are not only great homes for butterflies, birds, bees and other wildlife but also a place for people to connect with, and learn about, nature. Tiny Forests are planted based on the work of the Japanese botanist Dr Akira Miyawaki.



This is a 3 year old Tiny Forest in Wilkey. They grow fast indeed!



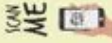
Get Involved

Enjoy

Come in and enjoy your Tiny Forest. Use it as a place to learn and play, to sing, have a picnic, use it as a venue, or just enjoy the company of trees and local wildlife. This is your special

Measure its benefits

With your help, we want to monitor and understand the environmental and social benefits they provide. Scan the QR code or visit <https://bit.ly/3C5NEQq>



Volunteer

Volunteer as a Tree Keeper and help us look after your Tiny Forest.

Email us at tinyforest@earthwatch.org.uk OR visit our website for more information tinyforest.earthwatch.org.uk.



More about your Tiny Forest

Your Tiny Forest is part of a growing network of Miyawaki forests across the UK, Europe and other parts of the world.

Each forest is unique! All trees and shrubs in your Tiny Forest are native, selected for this soil and site condition.

The 17 tree and shrub species in your Tiny Forest

- Wild Cherry
- Dogwood
- Hornbeam
- Hawthorn
- Large-leaved Lime
- Holly
- Small-leaved Lime
- Rowan
- English Oak
- Whitebeam
- Blackthorn
- Downy Birch
- Guelder Rose
- Silver Birch
- Dog Rose
- Purging Buckthorn



Illustration credit: Chris Smith

Powered by

earthwatch
EUROPE

Working in partnership with:



North Somerset
COUNCIL

"Look after the land and the land will look after you, destroy the land and it will destroy you."
— The First Peoples of Australia (Pitjantjatjara)
Supported by The WWF Foundation



Want to know more about Tiny Forests? Please visit www.tinyforest.earthwatch.org.uk
To report anti-social behaviour please call the police on 101 and please report any damage to 01634 620786

TINY FOREST - Tree Planting Day on 6 December 2024

Many thanks to the students from Locking Primary School, Winterstoke Hundred Academy (Locking Parklands), volunteers from Osprey, local residents and of course the Earthwatch Team, North Somerset Council and Locking Parish Councillors and staff.

Below are photos from the Planting Day



THE SPINNEY

In November, The Spinney received a significant upgrade, focusing on its path and lighting, this work was funded by North Somerset Council.

The project involved civil engineering work to improve the path's surface and the installation of new lighting fixtures. To facilitate these improvements, preparatory site clearance was necessary. This included trimming back overgrown saplings and greenery along the footpath and scraping the path itself to create a suitable base for the upgrades.

Locking Parish Council is delighted with the outcome of the contractor's work, anticipating a positive impact on the community. The levelled footpath aims to eliminate water pooling near the school gate, and drainage improvements at the rear of Locking Primary School will further enhance the area's usability.

Before and after works photos




The Spinney

Before & After Work photos




BOOGIE BEAT MUSICAL MOVEMENT



Weekly timetable


Boogie Beat Yatton, Weston, Taunton and Somerset




MONDAY	TUESDAY	WEDNESDAY	THURSDAY	FRIDAY
Meadvale Mixed age Class 9:30-10:15 10:30-11:15 Baby Class 11:30-12:15	Cheddar Mixed age Class 10:15-11:00 Cheddar Baby Class 11:15-12:00	Locking Mixed age class 9:30-10:15 10:40-11:25	East Brent Mixed age Class 9:30-10:15 East Brent Baby Class 10:45-11:30	Congresbury Mixed age Class 9:00-9:45 Uphill Mixed age 11:00-11:45

WEEKENDS:


Available for birthday parties




Boogie Beat
mixed
Babies to 5 years



Boogie Beat
babies
Babies to pre-walkers



Boogie Beat
parties
Birthdays and events



Boogie Beat
workshops
Ballet, drama, music, and more

Contact:
Naomi on- 07899677770
email-
naomi.hansford@boogiebeat.co.uk

Locking Senior Club

We held our annual Christmas meal at the Beachlands Hotel in December, lovely 3 course meal and excellent company.

Dates of our meetings:

5, 19 March,
2, 16, 30 April,
14, 28 May
11, 25 June

We meet fortnightly on Wednesday afternoon, 2pm-4pm in the main hall at St. Augustine's Church Centre.

If you would like more information, please contact Anthea Raines on 01934 820255 or pop along and visit us at one of the above dates, you will be most welcome.





BECOME A TREE VOLUNTEER

Do you want to care for nature, connect with your local community and expand your skills?

Then become a Tiny Forest volunteer and join our thriving Tree Keeper network! Depending on what you are interested in, there are different opportunities to take part in:

- Maintenance (weeding and litter picking in your local Tiny Forest)
- Community engagement (inspire local people to get involved)
- Science (counting butterflies, measuring trees and more!)

You can plan what activities you want to do and how often you want to do them, either on your own or along with your fellow Tree Keepers. Earthwatch will support you with the tools, training and resources. If you would like to become a Tree Keeper, visit tinyforest.earthwatch.org.uk/get-involved

Men's Breakfast

Saturday 6th March 2025, 9.00am at
St Augustine's Church Centre, Locking
Bring a friend. All men welcome



Free full cooked breakfast!
To book your place please call
Hazel Hobden on 01934 707981

COMMUNITY CAFE



**Locking Church Centre,
10am – 12.30pm**
Saturday 22nd February
Saturday 22nd March
Saturday 26th April
Saturday 24th May
Saturday 28th June

**Meet - Chat - Charity Stalls - Cakes - Teas
with Children's activities**

For details tel.: 01934 822857 or email huttonandlocking@gmail.com
Contact us if you would like a stall for your chosen charity

You are warmly invited to come and meet others in the
COMMUNITY LOUNGE
**in the Green Lounge, Church Centre,
Lychgate Park, Locking**
Every Tuesday afternoon 2pm-4pm



Cuppa - Chat - Books - Puzzles - Games

*Make new friends, have a friendly chat, be yourself and
relax. Ideal for carers to bring your loved ones too.*

ANTI-SOCIAL BEHAVIOUR

Graffiti around the Parish

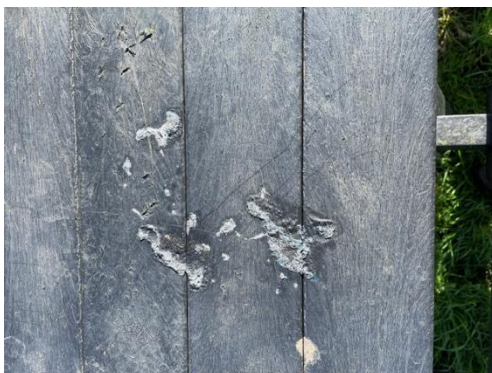
Once again, we have had a spate of graffiti on the picnic benches at Old Banwell Road Playing Field and the bench near the allotments.

We are hopeful that someone will recognise the graffiti tags below and contact us at LPC.Admin@lockingparishcouncil.co.uk



There was also an attempt to set fire to one of the picnic benches at Old Banwell Road Playing Field – as you can see from the below photograph the bench is badly damaged and may be beyond repair.

All incidents have been reported to the Police.



PARKLANDS SINGERS



We are a group of adults who enjoy singing together, having fun and making new friends. We sing for pleasure, choosing a range of familiar songs we enjoy. You do not need to be able to read music and we welcome all singing abilities. Our musical director, Lucy MacKay, leads us in a 'no pressure' style. We also enjoy leading 'singalong sessions' for groups of people who want to join in and sing with us. We led four singalongs during the last Christmas period, including with Locking Seniors and Hutton Ladies.

We meet on the first Wednesday of every month at Locking Parish Hall, Grenville Avenue, BS24 8AR from 7.30 – 9.15pm. There is a small charge (£5) to cover costs, including light refreshments. Your first visit will be free, to give you a chance to come and see what we do with no obligation. We laugh a lot, talk together and make new friends. Everyone is welcome to come along, we'd love to see you, although Pete, Don and Alan are particularly hoping to see a few more men coming to join them. Here are the dates of our next few sessions:

Wed 5 March, Wed 2 April, Wed 7 May, Wed 4 June.



For more information contact:

Christine Hall on 01934 827686 or chris.rushall@gmail.com

Tai Chi

Our popular, friendly,
weekly

Tai Chi sessions
continue.

Excellent exercise for
improving health and
well-being.

Come and give it a try!



Wednesdays

1.30pm for

one hour at

Locking Parish Hall

£6.50pp

Contact Cheryl: bubbingsprings@hotmail.com or 01278 781544

ENJOY CRAFTING



come and join the

crafty mares

Mondays 6pm - 8pm

**The Nurse Thomas Suite,
Locking Parish Hall BS24 8AR**

Please bring your own craft to start with.

The cost is £2 per session
to include tea/coffee and biscuits.

LOCKING MUSIC GROUP CELEBRATES 1ST ANNIVERSARY!

The u3a Locking Music Group (aka LMG), was formed by a merger of the Guitar Group and the Music For Fun Group, holding its first combined music session in Locking Village Hall on 9th January 2024. So, we are delighted to have just celebrated our first Anniversary in January, and are looking forward to many more to come. Here are some of us at our lunchtime Bring & Share 1st Anniversary party at Locking on 21st January 2025.



There are now over 20 of us and LMG is at maximum capacity. Our singers' voices range from bass to soprano, including jazz singing. The instruments played are acoustic, electric and bass guitar, tenor ukulele, keyboard, autoharp, harmonica, piano accordion, bodhran (Irish drum) and occasional snare drum. Our current song repertoire varies for example from Blue Moon, 1934, to Fairytale Of New York, 1988, and beyond.

We hope to play some traditional Irish songs for St. Patrick's Day in March, and played Christmas songs December 2024. We have tremendous fun, much joking and banter and are able to keep in touch in between sessions on our LMG WhatsApp group, ensuring plenty of feel-good endorphins.

For further information contact Rod 07949 476417 or Heather 07779 091077.



info@carleatheatrearts.co.uk

Carlea Theatre Arts provides a wide range of classes that welcome all abilities, from walking through to adults.

All pupils from little stars upwards can perform in our regular shows we produce at the Playhouse Theatre. Pupils also have the opportunity to take graded examinations with the ISTD as well as medal exams with the UKA. All teachers are highly qualified, DBS checked, first aid and safeguarding trained. Our current timetable at Locking Parish Hall is as follows:

Monday: 10.00-10.45am Little starlets, from walking-preschool.

5.15-6.00pm Grade 4 Tap

6.00-6.45pm Grade 4 Ballet

6.45-7.15pm Pointe work

7.15-8.00pm Grade 5 Modern

Tuesday: from 6 years upwards

4.30-5.00pm Body conditioning/flexibility

5.00-5.45pm Acro

Wednesday: 6-11 year olds

4.30-5.15pm Contemporary dance

11 years upwards 5.15-6.00pm

and 6.00-6.45pm contemporary dance.

Full timetable of classes is on our website: www.carleatheatrearts.co.uk

Saturday: 2.5 years and upwards.

9.15-9.45am Little stars ballet

9.50-10.20am Little stars Tap

10.25-10.55am Little stars Ballet

11.00-11.45am Pre Primary ballet

11.50-12.20pm Pre Primary Tap

12.30-1.15pm Primary Tap

1.15-2.00pm Primary Ballet

2.00-2.30pm Primary Modern



At Locking Parklands Hall:

Thursdays: 5.00-5.45pm Grade 3 Ballet

5.45-6.30pm Grade 4 Modern

6.30-7.15pm Grade 3 Tap

7.20-8.05pm Adult Tap

8.05-8.50pm Adult Jazz

Saturdays: 9.30-10.15am Grade 1 Ballet

10.15-11.00am Grade 1 Tap

11.00-11.45am Grade 2 Modern

11.50-12.35pm Grade 2 Ballet

12.35-1.20pm Grade 2 Tap

1.20-2.05pm Grade 3 Modern

ACCESS TO YOGA



Many seniors in Locking regularly come along to Chair-based Yoga Exercise sessions at Locking Parish Hall on Thursday mornings.

They say that it is an enjoyable way to exercise and learn to relax. As it is very popular, Haze is currently running a reserve list. Please get in touch if you wish to have your name added. However, if you prefer not to wait or if you find it difficult to get to the venue, Haze also runs a live online class via Zoom every Wednesday at 11.15am.

All you need is access to a laptop, iPad or tablet to take part in the comfort of your own home. Haze is happy to chat to you in advance to help get you set up if you've never used Zoom before. Live Zoom classes mean that you can see and hear Haze and she is able to see you and talk to you to let you know how you are doing. Want to give it a try? Your first class is FREE.

Contact Haze haze@accesstoyoga.co.uk Tel: 07980 697145



Poppy Appeal Organiser Needed

Following the retirement of our long-standing Poppy Appeal Organiser, due to ill health, the Hutton, Oldmixon and Locking area is in need of a new Poppy Appeal Organiser.

The area covers the 3 communities, plus several local businesses and schools. The Poppy Appeal was established in order to be able to support the Armed Forces Community and nationally raises approximately £50 million annually.

In recent years, the local appeal total has gradually risen to about £25,000 and we are keen to build on this success. The role will involve ordering merchandise and organising the annual collection. It is possible to share the role with another person.

If you would like to know more about the position, please contact the Somerset Poppy Appeal Manager: PBunce@britishlegion.org.uk - 07458118840



The ever-popular Military History Weekend returns to The Helicopter Museum in Locking this year and will see the land surrounding Weston Airfield's restored WW2 era Control Tower and Pilots Block brought to life by re-enactors, living history camps and historic military vehicles from around the country on Saturday 26th and Sunday 27th April.

Organised in conjunction with SSAFA, the Armed Forces Charity, the weekend will feature 1940's Wartime singers performing in the Museum, Tank driving and live firing demonstrations, German vs Allied weaponry small arms firing demonstrations and a Living History Encampment to explore.

The Helicopter Museum (Registered Charity no 281053) is home to the largest collection of helicopters in the World. The Military History Weekend is the charity's main fund-raising event of the year. Also this Spring...

May 11th - Cold War Themed Open Cockpit Day

May 24th - Cars and Copters, Performance Car Show



A Big thank you to all that came out to see the Santa float. What an end of year for the group, even the weather could not stop Santa just a day or two late but before Christmas eve.

Big things are in planning for this year for the group, from an Easter bunny hunt to a summer fete. It will be nice to see all the village at these events.

With more space for young people to join in, scouts are open to 9 ½ to 13 ½ year olds to come and have a go and see what the largest youth movement in the UK does and have fun doing it. We have spaces in our Wednesday group.

For more information contact Leaders:
Paul 07887 550260 or Gareth 07780 830966

LITTLE ARK TODDLER GROUP

We are a very friendly group of parents, grandparents and carers who meet every Wednesday morning between 10:30 to 12:30 during term time in the Church centre in Locking Village. All children are welcome from birth to school age.

We have a large variety of toys to suit all ages which include a slide, Happy Land, Play dough, a kitchen and much much more and an area for the very young children. Every week we have a different craft activity.

The cost is £2 per family which includes a cup of tea/coffee, squash and biscuits

All are welcome to come along so please give us a try and join in the fun.

For further information/questions please contact Gail on 07818

677635 or look up our Facebook page – “Little Ark Toddlers”



ST AUGUSTINE'S CHURCH - NEW VICAR

The Rev Larissa Trust was licensed as Vicar of Locking and Hutton in St Augustine's Church, Locking, on 3rd October 2024.



The special licensing service was conducted by the Archdeacon of Bath, Rev Charlie Peer.

Over 150 people attended including the Area Dean, clergy from surrounding churches, and local dignitaries including chairpersons from Locking and Hutton Parish Councils and Head teachers from Locking and Hutton schools.

The service was relayed to the Church Hall which was filled by members of the congregations from Locking and Hutton, and from Christ Church in Weston where Larissa had previously been curate. The service was also streamed online to those unable to attend in person.

A quarter peel was rung on the church bells by Locking Bell ringers, and new Vicar Larissa ceremonially rang the bell to celebrate her arrival.

Bishop Michael of Bath & Wells had planned to attend but was unable to as he was stuck in traffic on the M5 which was closed that evening. He visited for a service on 8th December to officially hand over the licensing document.



ST AUGUSTINE'S LOCKING CHURCH OFFICE

Contact Corriene in the church office for help, information and if you would like to receive our monthly 'Stay Connected' newsletter.

Church Office: 01934 822857 (Open Tues, Thurs & Fri 9.00am -12.00midday)
Email: huttonandlocking@gmail.com

St Augustine's website: www.staugustineslocking.org
for news, services and activities

Letter from your Vicar

Today I saw the first daffodils of the season! (I'm writing this article in early February). By the time you read this they'll probably be everywhere!

The spring flowers seem to put us in the mood to clean and declutter our homes! As nature renews itself, we also get our houses in order and give ourselves a fresh start.



In Isaiah 43 God speaks through his prophet, "Behold, I will do a new thing. Now it shall spring forth..." He goes on to describe the transformation that his presence and power will bring: "a road in the wilderness and rivers in the desert."

At this time of new life, God also offers us a spiritual springtime! Is there some spiritual decluttering or spiritual spring cleaning that would make a difference in your life?

Are there relationships that could do with a fresh start or a fresh attitude?
Are there grumpy habits that should be given up?
Are there some positive things that would be good for us to take up?
Could we treat those who frustrate us with more tolerance and friendliness?
Could we speak positively rather than critically?
Could we show more empathy and compassion to those around us, particularly those we find difficult?

As we say goodbye to Winter, God is calling us to move forward with open eyes and hearts to live out his love in our families and friendship groups, workplaces and social spaces.

What positive changes could you adopt to make your little corner of the world a better place?

May God bless you this spring and strengthen you to mould your life in a way that blesses you and those around you.

Every blessing,
Rev Larissa Trust, Vicar of Locking

Easter at St. Augustine's Locking



**Sunday 13th April
10am Palm Sunday Service**



**Friday 18th April
10am Good Friday Service**

**Easter Sunday 20th April
10am Easter Holy Communion**



EASTER

EASTER BONNET PARADE

THURSDAY 3RD APRIL 2025
@2PM

**JOIN US FOR AN EASTER EXTRAVAGANZA
THROUGH THE VILLAGE**

The parade will start at Meadow Drive entrance

Every entry will receive an Easter egg donated by our fantastic FOLS team!

ROUTE MAP will be shared early in Term 4

UPDATE FROM LOCKING PRIMARY SCHOOL



It certainly has been a very busy and exciting winter for our Locking family! Some of our highlights have included:

- Creation of a new outdoor canopy for our Year 1 classes (Maple and Beech) as part of our development and pilot of new Year 1 curriculum. We are working to develop this a bespoke Year 1 outdoor provision and have some exciting plans for the summer!
- Following the upgrade of the Spinney pathway and we have finished our fencing project (along the pathway) which means our whole site has new fencing and is fully secured.
- We were delighted to be included in the Earthwatch project with Locking Parish Council and look forward to be able to make full use of the outdoor forest school classroom.
- We were thrilled to receive a £4000 grant from North Somerset Supporting Vulnerable families and we will be using this to develop our sensory and nurture provision at school over the coming months!

We would also like to extend our sincere thanks to the whole Locking community, Parish Council and our friends at St Augustine's for their ongoing support – it was another fantastic Fireworks Night in November and we are grateful for all your support!

We are looking for **new community governors** to join on our local governing body... please get in touch with us if you think you can help!



MESSAGE FROM PCSO – Steve Hemmett



Hello everyone, my name is Steve Hemmett, and I serve as the Police Community Support Officer for the areas surrounding Locking, Locking Parklands, Hutton, and Bleadon. I would like to take this opportunity to introduce myself to those who may not yet know me.

To enhance my service to the community, I will be holding my beat surgery on Tuesday mornings from 10:00 AM to 12:00 PM in the Nurse Thomas Suite at Locking Parish Hall. The upcoming dates for these sessions are 18 March, 15 April, 13 May and 10 June 2025.

During these surgeries, I will provide various literature on crime prevention and address any questions or concerns you may have. I encourage you to attend and take advantage of these resources.

As the weather improves, I will also be organizing bike marking events, where our team can mark your bicycles free of charge. This initiative is an effective way to deter theft and safeguard your property.

I would like to address ongoing parking issues at Meadow Drive and Mendip Rise. I have reached out to the highways department and the council but have yet to see progress. I aim to enforce parking regulations during my shifts, but I am also attending to five other schools with similar issues. I will continue to support the school and residents to the best of my ability.

Finally, as open spaces dry out, I encourage everyone to remain vigilant and secure any gates or entrances to large open areas such as parking lots and football fields. This practice is crucial in preventing illegal encampments. If you observe any suspicious activity, please do not hesitate to contact 101, as there is new legislation in place to assist landowners in managing these situations

Please feel free to approach me with any concerns or issues you may have. Together, we can work towards making our community a safer and better place to live.



Avon and Somerset Police **NEIGHBOURHOOD POLICING**

Talk to us

Join your Neighbourhood Policing Team at

Drop in and speak to PCSO Steve Hemmett, whether you want advice on how to protect your belongings, arrange for free bike security marking, more information about the work we are doing in your area, or you want to raise a concern about an issue in your community.

Time: 10:00 to 12:00PM **Tuesdays**

Date: 15/4/25 13/5/25 10/6/25 08/07/25 05/08/25

Location: Locking Village Hall, Grenville Ave,
Locking, Weston-Super-Mare BS24 8AR.

For more information please visit:
www.avonandsomerset.police.uk/your-area

Follow us on    



LOCKING VILLAGE PARK

**Children's
play area**



**No dogs
allowed**

There is a Public Space Protection Order on Locking Village Park and it carries a £75 Fixed Penalty Fine.

For dog owners walking through the allotments, please keep your dog on a lead at all times and keep them out of the water troughs.

Locking Parish Council has been made aware of several incidents of a dog attacking other dogs within the parish.

REPORTING ANY INCIDENTS YOU WITNESS

NORTH SOMERSET COUNCIL

www.n-somerset.gov.uk/connect or 01275 888 802

- Dog fouling
- Missing or stray dogs
- A dog attacking another dog

RSPCA

www.rspca.org.uk or 0300 1234 999

- Cruelty to an animal

AVON AND SOMERSET POLICE

www.avonandsomerset.police.uk or 101

- A dog attacking a person or assistance dog
- A dog dangerously out of control
- A dog on a main road or motorway



FLY TIPPING

Fly Tipping incidents continues to be a problem in our community.

Fly tipped waste includes household waste, building rubble, domestic white goods, and clothes – Below is photographs of waste dumped at Old Banwell Road, Locking over the past few months:



Fly-tipping is the illegal dumping of waste. It can cause pollution to land and waterway. It also costs significant amounts of council tax payer's money to clear away.

Fly-tipping is a serious criminal offence for which you can be prosecuted. The courts have various powers available to them to tackle fly-tipping. This includes:

- imprisonment
- unlimited fines
- an order to deprive you rights to a vehicle used to commit the offence

It can carry a maximum fine of £50,000 or even more if the case goes to Crown Court, and a prison sentence of up to five years.

Whilst information can sometimes be obtained from deposited waste that leads to a possible perpetrator, it is extremely helpful to receive details from individuals that witness someone fly tipping.

If you witness fly-tipping, please report it to North Somerset Council with the following information:

- Date and Time the fly tipping was seen
- Exact location (mobile apps can assist with this)
- Details of items deposited and quantity
- Details of the person(s) depositing the waste
- Details of the vehicle used by the person(s) to deposit the waste including make, model, colour, registration, and any distinguishing features (e.g. business name)

If your waste is found fly tipped and you cannot provide documentation showing who collected it, you could end up with a fine

REPORTING ISSUES AND PROBLEMS

Resident Parishioners are encouraged to report issues themselves to various organisations. The Clerk & Parish Council do try to deal with reported concerns within the resources available. Please use the chart below to find the right contact to report a concern.

WHAT IS THE ISSUE?	WHO DEALS WITH IT?	CONTACT DETAILS
Fly tipping; flooding; pot holes; street lighting (other than the 26 pc-owned lamps); missed recycling; dog fouling on pavements; overgrown hedges that obstruct footpaths & roads	NORTH SOMERSET COUNCIL	www.n-somerset.gov.uk 01934 888 888
Anti-Social behaviour, cold calling; suspected phone scam; parking issues; speeding	POLICE	101 999 (IN AN EMERGENCY)
Locking Parklands Residents can also contact Preim Ltd for any of the following: fly tipping; flooding; potholes; overgrown hedges that obstruct footpaths or roads	PREIM Ltd	Regional Customer Support Team helpdesk@Preim.co.uk 24/7 Helpline 01778 382210
Locking Village: 26 PC owned street lights, dog bins, litter bins, street furniture, Parish Hall, park, allotments, open spaces	LOCKING PARISH COUNCIL	LPC.Admin@lockingparishcouncil.co.uk 01934 820786

ADVERTISE WITH US

Looking @ Locking is a quarterly, A5 publication that is hand delivered to all of the houses in the Locking Parish and is available online at www.lockingpc.co.uk

The Parish Council has decided to include advertisements in the newsletter to help offset the printing costs. Only adverts from Weston-super-Mare businesses/organisations will be accepted.

A5 Full page portrait
£125

Half page landscape
(9.7 cm high x 13.1cm wide)
£49

Quarter page portrait/landscape
(9.7 x 6.3cm (portrait)
4.7 x 13.1cm (landscape)
£28

For further information email: LPC.Admin@lockingparishcouncil.co.uk

LOCKING PARISH COUNCIL



01934 820786
07942 670873



LPC.Admin@lockingparishcouncil.co.uk



www.lockingpc.co.uk



Follow us on FACEBOOK -
<https://www.facebook.com/Lockingparishcouncil/>



Locking Parish Hall
Grenville Avenue
Locking
Weston-super-Mare
BS24 8AR



Your COUNCILLORS

CLlr Paul Jones	Chairman	0792 8680464
CLlr Elfan Ap Rees		01934 822524
CLlr Peter Lacey		01934 822660
CLlr Carl Prosser		07799 607748
CLlr Wendy Ashdown		07983 573766
CLlr Bill Bearsby		01934 823144
CLlr Mike Tremlett	Vice-Chairman	07435 969050
CLlr Lisa Clark		07872 498398
CLlr Justine Carter		07891 499983
CLlr Ian Hilder		07724 996269
CLlr Paul Schofield		07517 500567
CLlr Paul Huish		07484 172575
CLlr Tess Poynton		07748 612107

Published by Locking Parish Council.

Any views expressed by contributors to 'Looking @ Locking' are not necessarily the views of the Parish Council nor are they endorsed by the Council.