

Looking at Locking



**Locking Primary School, Parish Councillor's
and Staff our Tree Planting Heroes!**

Edition: Spring 2024

Welcome to our Parish Newsletter

Business Adverts in Parish Newsletter

Locking Parish Council

Looking @ Locking Newsletter – Advertising

The Parish Council has decided to include advertisements in the Looking @ Locking Newsletter to help offset the printing costs. Only advertisements from Weston-super-Mare businesses and organisations will be accepted.

The newsletter is published 4 times a year and is delivered by hand to all of the houses in Locking Parish. The newsletter is also published online at www.lockingpc.co.uk

If you would like to enquire about advertising please contact the Clerk via:

clerk@lockingparishcouncil.co.uk

Locking Newsletter is an A5 publication delivered quarterly to over 1700 households in Locking Parish.

It is also available online at www.lockingpc.co.uk

Advertising Rates We offer you the opportunity to advertise with us in **FULL COLOUR** (print and online) at no additional cost.

The below rates are per issue.

Advert size	Size	Cost
A5 full page Portrait	A5	£125.00
Half page (landscape only)	9.7cm high x 13.1cm wide	£49.00
Quarter page (portrait and landscape)	9.7cm high x 6.3cm wide (portrait) 4.7cm high x 13.1cm wide (landscape)	£28.00

Locking Community Living Room at Locking Parish Hall

Now open Mondays 12.30pm - 2.30pm

What is a Public Living Room

Public Living Rooms are a free relaxed space for folk to sit, get together, chat and share a cuppa. Come along and meet new people in your community, charge your phone, laptop, tablet. Everyone is welcome



Parish Pantry at Locking Parish Hall

Take what you need
Leave what you can

Open Tuesdays & Thursdays 9.30am - 12.30pm

For further details contact: Tel 01934 820786 or clerk@lockingparishcouncil.co.uk





VIEW FROM THE CHAIR . . .

Welcome to the Spring edition of 'Looking @ Locking'. I hope you find this edition to be helpful, interesting and informative.

What have we your Parish Council been doing since our last edition of 'Looking @ Locking'? Over the past 3 months we have been very busy setting our budgets and agreeing an appropriate and realistic precept figure for 2024 to 2025. We have endeavoured to keep our costs down and are always looking for ways to reduce expenditure, however there are sometimes factors outside of our control that can impact on our expenditure and budgets. We therefore have ensured that our reserves are capable of meeting any such contingency and that we are able to continue to operate effectively.

Works have finally begun in making the footpath known locally as the 'Spinney' which runs between Locking Parklands and Locking Village a safer pathway. Trees have been cut down and removed and the area is now much lighter. Further works are planned which include lighting and surface works, notices will be promulgated prior to those works being conducted by North Somerset Council.

The Old Banwell Road Playing Field (OBR) and Carpark upgrade project works will hopefully continue in the coming financial year. To date the Carpark has been re-stoned and levelled, drainage gully's have been installed and half of the area tarmacked. The tarmacked area has also been lined with 'enter and exit' directions and parking bays marked. A swale with ponds has been installed which now slows water outfall from the Car park and OBR Playing Field even during periods of unprecedented heavy rainfall.

Our community orchard continues to grow; please excuse the pun! With the help Locking Primary School we have installed more fruit trees.

Future works to the infrastructure of the OBR Playing Fields are being considered, hopefully, such works will make the area more accessible and be of benefit to all in our growing community.

As you can see from above, we are facing some interesting but challenging times ahead and whilst we continue to work in partnership with other organisations there is still a requirement for volunteers to help us meet our target in making this our community a great place live.

Cllr Paul Jones
Chairman

Locking Parish Council

have a vacancy for a Clerk's Assistant

PART-TIME POST (PERMENANENT)

15-18HRS PER WEEK

**Starting Salary Grade Scale 13 full time
equivalent £26873 (£13.97 per hr)**

We are looking for someone who is highly organised, with excellent communication skills and the ability to work independently and as part of a team.

- Provide support to the Parish Clerk to assist in the smooth running of the Parish Office
- You will need to be a good communicator, with strong interpersonal skills
- Able to demonstrate competent use of of Microsoft Office 365 - Word, Excel, Outlook and Publisher
- Have website admin and social media experience
- Be well organised, efficient and able to work independently and with supervision

This role has the potential for development for the right candidate, with the possibility of moving into the Clerk/RFO role in the future.

If interested contact the Parish Clerk to obtain application pack

Email: clerk@lockingparishcouncil.co.uk

Closing dates for applications 29 March 2024

[LOCKING PARISH COUNCIL MEETING DATES FOR 2023/24](#)

Unless otherwise stated the Full Council meet the 1st Thursday of the Month and Committees meet on the 3rd Thursday of the Month, most meetings start at 7.30pm.

Meetings are normally held at Locking Parish Hall but occasionally they have been held at The Radio Wing and Oaktree Park Community Hall – location details will be on the meeting Agenda.

Members of the public are very welcome to attend. Please check our notice boards and website www.lockingpc.co.uk under Agenda & Minutes for further details.

LOCKING ANNUAL PARISH ASSEMBLY LOCKING PARISH HALL

Thursday April 18th 6.30pm

The Annual Parish Assembly is an opportunity for members of the public to learn what activities the various Organisations in Locking carry out during the year. It is also an opportunity to raise any issues with the Parish Council. Only Parishioners who are registered on the Electoral Roll can vote on any issues. Other members of the public can attend and speak but they cannot vote.



Locking Parish Council

COUNCIL BUDGET 2024-2025 What does this mean for you?

How is your council tax spent?

<p>Old Banwell Road Playing Field The Council are responsible for the maintenance of the pitches and the play/gym equipment, changing rooms and park & stride car park. We maintain the equipment, undergo regular inspections along with grass cutting, fences, tree, attenuation pond and swale maintenance, also the booking of the pitches</p> 	<p>Grenville Avenue Park The Council are responsible for all the play equipment, picnic tables, benches and gym equipment. We inspect, manage and maintain the play and gym equipment, picnic tables, benches, safety surfacing, fencing, grass cutting and tree maintenance.</p> 
<p> Locking Parish Hall The Parish Council are responsible for the bookings and maintenance of the hall and car park.</p>	<p> Staff The Council employ 3 members of staff: The Clerk, Clerk's Assistant and Parish Orderly</p>
<p>Allotments The Council are responsible allocation of plots and maintenance for the allotment site at the rear of Byron Road, Locking. Currently there is a waiting list for a plot.</p> 	<p>Trees/hedges and flower tubs The Council have responsibility for trees and hedges at The Green and the along the Coronation Garden and the flower planters at Locking Village, some at Flowerdown Park and Oaktree Park.</p> 
<p> Litter/Dog Bins The Council employ a Parish Orderly, who collects litter and empties dog bins in the areas we are responsible for, which is currently all litter and dog bins situated within Locking Village.</p>	<p> Street Lights The Council are currently responsible for 22 street lights (we pay the electricity) and 5 solar street lights in Locking village. The remaining lights come under the responsibility of North Somerset Council.</p>
<p>Councillors The Council employ a Clerk, and one area of responsibility is to ensure councillors operate within the parameters of the law. Your Councillors are all voluntary – only District and County Councillors receive an allowance.</p> 	<p>Grass Cutting The council have a 3-year contract for areas we are responsible for including the park and Old Banwell Road Playing Field. Our Parish Orderly cuts the small pockets of land and some of the Public Rights of Way within the parish and North Somerset Council do the rest.</p> 

The Precept is the element of your Council Tax that is paid to Locking Parish Council. Every year, the Parish Council draws up a budget and calculates how much money it needs for the next Financial Year. This is then submitted to North Somerset Council (NSC). NSC co-ordinates the other demands from the Police and themselves and come up with the rate to be paid from 1st April that year. For 2024-2025 the Parish Council have requested a 6.9% increase on Band D Properties.



"Your Parish
Council Needs
YOU"

MAKE A CHANGE BECOME A PARISH COUNCILLOR

Locking Parish Council have vacancies for 4
Councillors

Are you looking for a new challenge?

If you're passionate about where you live and want to
make a difference then Join the Parish Council.

For more information email clerk@lockingparishcouncil.co.uk

Locking Parish Council delivers and facilitates projects and services that make
a positive difference to the community. The Parish Council aims are to support
and improve the quality of life for the whole Parish of Locking.

Councillors are community leaders who care about the local residents they
represent, to bring about the best outcomes for all parts of the community.

Locking Parish Council Small Grant Scheme

Locking Parish Council's annual budget includes a sum of money for grant
awards.

The **Grant Awards Policy** has been drawn up to demonstrate a fair and
transparent process and sets out the procedure the Council will follow when
making its decision.

A grant is any payment made by the Council to an organisation for a specific
purpose that will benefit the Parish, or residents of the Parish; and which is not
directly controlled or administered by the Council.

Any organisation wishing to apply for grant funding must fill in a
grant application form and submit it to the Clerk.

The Council awards grants, at its discretion, to organisations which can
demonstrate a clear need for financial support to achieve an objective which
will benefit the Parish by:

- Providing a service
- Enhancing the quality of life
- Improving recreation and/or sports
- Improving the environment
- Promoting the Locking Parish in a positive way

Locking Parish Council will not normally make grants to organisations outside
of the Parish unless there are direct benefits to the Parish, or its
residents. Applications should be made for 'one-off grants' that will not result
in any recurring expenditure for the Parish Council.

Further details and application form available from the Clerk



The Tree Council Branching Out Fund Grants for UK tree planting projects across the community

Locking Parish Council is supporting biodiversity and developing green spaces by **planting fruit trees at their Community Orchard**, thanks to funding from The Tree Council's [Branching Out Fund](#).

Branching Out provides grants ranging from £250 to £2,500 in value to community groups, schools, small registered charities, and Tree Warden Networks seeking to establish trees, hedgerows, and orchards throughout the winter planting season.

This year, **Locking Parish Council** successfully secured grant support through the Branching Out Fund and during Feb 2024 planted 9 fruit trees with the help of Locking Primary School.

The Parish Council are very grateful to have been awarded a grant for the purchase of a further 9 assorted apple trees, a mixture of eating and cooking to add to the fruit trees planted in 2022.

At the Community Orchard, Old Banwell Road Playing Field on the 26 February Councillors with the assistance from pupils at Locking Primary School planted our apple trees. It's exciting to think that in the future these same children will be picking their own apples from trees they planted.

The Community Orchard is a free resource open to all in our community, with fruit trees ranging from apple, plum, pear and cherry along with blackberries and sloe berries, as well as providing a food source for wildlife.

Now in its 17th year, Branching Out has supported hundreds of projects in communities throughout England, Wales, Scotland, and Northern Ireland, delivering new habitats for wildlife, and a green living legacy for residents and visitors to enjoy, from Cornwall to Carmarthenshire, and Fife to Fermanagh.

The focus is on planting a variety of tree species, bare root, with cardboard or bioplastic protection. Comprehensive advice around the types of trees to plant and the tree protection needed is provided by The Tree Council as part of the application process.

The Tree Council Grants Officer, Geraldine Creaven said: “Branching Out presents a fantastic opportunity for schools and community groups large and small to get their spades in the ground and start establishing life-enhancing and biodiversity boosting trees, hedgerows, and orchards in their neighbourhoods. “We’re so thrilled for all our successful applicants, especially **Locking Parish Council and the Community Orchard!**”

To find out more about The Tree Council’s Branching Out Fund, please visit <https://treecouncil.org.uk/grants-and-guidance/our-grants/branching-out-fund/>



It’s Sunday morning and Cllrs along with Jackson are preparing the ground for tree planting on Monday



Its Monday - Locking Primary School Children, Parish Councillors and Staff - our Tree Planting Heros

LOCKING COMMUNITY EVENTS WORKING GROUP

The aim of the Community Events Working Group is to bring people together, to build relationships and create a sense of belonging within the community. By organising events, we can provide a platform for residents to meet and get to know each other, fostering a strong sense of community spirit.

These events can range from small social gatherings to larger scale events such as fairs, festivals, and fundraisers.

The Community Events Working Group is a great opportunity for individuals and organisations to get involved and make a positive impact in their community. By working together, we can create a diverse range of events that cater to the interests and needs of our residents.

So, whether you have a passion for event planning, or simply want to get involved and make a difference, we encourage you to join the Community Events Working Group and help us make our Parish a vibrant and thriving community for all to enjoy. Let's come together, have fun, and build a stronger, more connected community!

Locking Parish Council hope to build stronger community ties by supporting the Community Living Room, Locking Book Exchange and the Tea & Tech sessions. We are looking for other community led initiatives that can bring our community together – we are always interested in any ideas you may have, please contact the Clerk if you have an idea you would like to share.

Coming up on 7 September is our **Autumn Show**, we are looking for volunteers to help out on the day with setting up, providing refreshments or be on the judging panel.

Please see notice boards and Facebook for upcoming events and dates.

Contact the Clerk for further details: clerk@lockingparishcouncil.co.uk



Locking Skatepark Project Update

The Locking skatepark project has maintained momentum and the final design has been ironed out by the group and agreed by Parish Council.

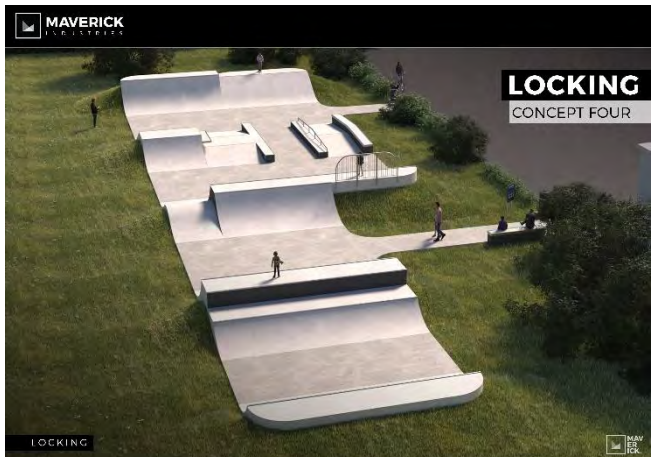
Agreement is already made by Parish Council to submit a planning application and this is to be paid for by funds raised by the group. The chosen provider Maverick is now preparing the planning application drawings and accompanying documentation so it will hopefully be submitted shortly.

Maverick will then work with the skatepark group to prepare and submit applications to obtain grant funding through available funding streams.

We hope that planning will be granted in the coming months and that funding will then be obtained shortly thereafter.

The good news is that all of this is at no cost to the skatepark group

or the Parish, other than the Parish Council providing the land for the skatepark to be built on.



Watch this space!

For more information please contact us at:

skateparksteeringgroup@lockingparishcouncil.co.uk or find us on Facebook and Instagram under "Locking Skatepark Project"

Save the Date!

Locking Community Events Group

AUTUMN SHOW

Saturday 7th September 2024

Locking Parish Hall

2pm–5pm

Free registration

Refreshments

Adult & Children Classes Open to All



Registration forms, show schedule and timetable
available from July 2024

About the Show

This show is a chance to display your home-grown fruit, vegetables and flowers, and home-made preserves, focusing on traditional gardening cooking and craft activities.

You do not need 'show experience' to take part, people of all ages and abilities can join in. The point of the day is to have fun and celebrate our community.

Registration forms, programme and show timetable will be available from July 2024 please contact the Parish Council office or email: clerk@lockingparishcouncil.co.uk

Prizes & Points

The Show is more about taking part than winning prizes.

However, certificates and 'Best in Show trophies/medals will be awarded to competitors with the most points overall in the following categories: Points will be awarded in each class.

3 points for a First, 2 points for a Second and 1 point for a Third.

SHOW SCHEDULE

SECTION 1 VEGETABLES AND FRUIT

All items are to be displayed on a plate

1. One Marrow
2. 3 eating apples – any variety
3. 3 beetroot – any variety
4. 2 courgettes
5. 3 onions
6. Presentation of 6 runner beans
7. 3 Leeks
8. Biggest Onion
9. Biggest Leek
10. Longest runner bean
11. Best "wonky" vegetable or fruit

SECTION 2 FLOWERS & FLORAL ART

12. One Autumn Wreath
13. 3 dahlias in a vase
14. Flower arrangement inspired by "Harvest Time"

SECTION 3 HOME PRODUCE

Display plates for items 17-19 in this section

15. Jar of Jam, no lid cellophane only
16. Jar of fruit curd, no lid cellophane only
17. Jar of chutney, any variety, no lid cellophane only
18. Victoria Sandwich Cake

Children may enter any of the classes in this programme (with parent's permission), but the classes in Section 4 are only for children

SECTION 4 CHILDREN'S SECTION

These classes will be judged in two age groups: under 8 years and 8 - 14 years

19. An animal made from vegetables and/or fruit
20. A dinosaur's garden on a plate of not more than 10" diameter, any medium including plasticine and play-dough
21. A decorated rock with a painted flower



LOCKING PARISH HALL “THE HEART OF THE COMMUNITY”

Grenville Avenue, Locking BS24 8AR

Locking Parish Hall can accommodate a wide variety of events whether you want to take part in a class/ club or maybe celebrate your birthday or anniversary.

Facilities Include:	Suitable for the following occasions:
<ul style="list-style-type: none"> ★ Main Hall ★ Performance stage ★ Spot lights & disco ball ★ Sound system (blue tooth enabled) ★ Microphone ★ Induction loop ★ Access to adjacent play park ★ Kitchen (fully equipped) ★ Disabled Toilet ★ Baby changing facilities ★ Wheelchair Access ★ WIFI ★ Parking 	<ul style="list-style-type: none"> ❖ Christenings/Blessings ❖ Children’s parties (with or without a bouncy castle) ❖ Anniversary ❖ Pantomimes ❖ Christmas Parties ❖ Musical Concerts ❖ Band Practice ❖ Choir Practice ❖ Reunion ❖ Wedding ❖ Wakes ❖ Training ❖ School Events ❖ Societies/Clubs ❖ Corporate Events ❖ Fitness Groups/Yoga/Karate ❖ Dance Classes ❖ Baby Groups

You are very welcome to come and look around the Hall on Tuesdays between 10am-2pm, Please contact the Clerk to make an appointment. The Parish Hall is adjacent to a large Play Park with Picnic tables and outdoor gym equipment for the whole family to enjoy whatever age you are!

The cost of the hall is extremely competitive and we also have a special rate for Locking Parishioners.

A scale of charges is available on the following page of this newsletter and can also be found on our website: - www.lockingpc.co.uk

Locking Parish Hall



Hall Hire Charges 2024-2025

1 Meetings/Charitable Organisations	Parish	Non-Parish
Adult Monday - Sunday - Afternoons/Evenings Youth Monday - Sunday - Mornings/Afternoons/Evenings	£10.12 £4.73	£18.37 £6.82
2 Parties/Dances etc Adult Sunday - Thursday Friday and Saturday Youth (<u>Under 14</u> and under supervision only) Monday - Sunday	£11.27 £12.43 £10.12	£19.25 £21.20 £14.74
3 Commercial Organisations Adults Monday - Sunday - Afternoons/Evenings Youth (<u>Under 14</u> and under supervision only) Monday - Sunday - Afternoons/Evenings	£12.43 £6.82	£21.90 £11.22
4 Nurse Thomas Room Adult Youth (Under supervision only)	£5.28 £3.85	£7.70 £6.82
5 Crockery Hire Hire charge per session £7.15 Refundable deposit payable in advance £10.00 (plus any breakages)		
Notes <ol style="list-style-type: none"> 1) All prices quoted are per hour - Setting up and clearing away MUST be taken into consideration when working out the time that you wish to hire the hall from and until. 2) All bookings (except for regular users) require a refundable deposit of £50.00. 3) All charges are reviewed annually 		

ASSETS & AMENITIES COMMITTEE

Parish Hall

The Parish Hall continues to be a hive of activity but we still have availability for parties/celebrations/meetings etc., please contact the Clerk for details.

Our last **Community Living Room** will take place on 26 March, and we plan to reopen again at the end of September. A big thank you to Cllr Wendy Ashdown, Cllr Lisa Clark, Cllr Paul Jones and of course Irene our volunteer librarian who regularly volunteered their time to this worthwhile initiative and of course, our wonderful residents who attended and provided the fun, laughter and chat.

Looking forward to seeing you again in September.



Community Living Room

Locking Book Exchange is changing to a Monday 12.30pm-2.30pm

We are pleased to see that **Locking Book Exchange** is being well used. As well as books for all ages, we have jigsaws and DVD's. This is a free service, open to everyone, there is no registration or fee. Just bring a book and exchange for one or two you want to read. An easy, fun way to swap books you no longer need.

Please note: we can no longer take hardback books or jigsaws – we are running out of space!!

Locking Parish Pantry is open at the Parish Hall **Tuesdays and Thursdays between 9.30am-12.30pm**, this initiative is for residents of Locking Parish who are struggling with the cost of living. Please don't be offended if asked for ID. We ask that you only take what you need and for those more fortunate to donate what you can.

LOCKING VILLAGE PARK



As much as we love our furry friends there are no dogs allowed in Locking Village Park. There is a Public Space Protection Order on the Park and it carries a £75 Fixed Penalty Fine.

Notices are at each of the entrances to inform that dogs are not allowed.

We ask that dog owners respect this as you will be asked to remove your dog and a fine could be issued.

Allotments

There are no plot vacancies at the moment and we do have a waiting list, if you would like to be added to the list, please contact the Clerk.

A reminder for dog owners walking through the Allotments, please keep your dog on a lead at all times and also please keep them out of the water troughs.

The Spinney Footpath

Just a brief update on works at The Spinney footpath, the tree works were completed in January.

North Somerset Council have advised the following:

Thorough design is being prepared and costed; surveys are being prepared. It's likely that the path will need to be closed for the duration of the works (Exact duration TBC).

North Somerset Council will keep the Parish Council updated.

The Green



The Green

We have installed a picnic bench at The Green. This is a small area of green opposite the Coronation Garden and is surrounded by hedging with a small access gate – lovely space if you want to ‘Get away from it all’ to sit, read or enjoy a picnic.



The Green

Coronation Garden and Flower Pots

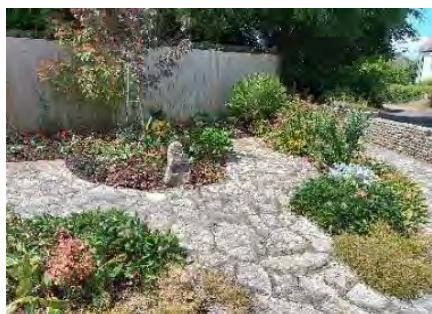
Planting of the garden and flower pots will be taking place soon, The bedding plants are given to Locking Parish from North Somerset Council and we thank them for this generous donation.

You may recall when we planted up the flower tubs and Coronation Garden last Spring, we had a number of thefts of bedding plants. This was very disappointing and upsetting as volunteers put their time and effort into helping Locking look beautiful.

Please keep a watch eye out and as we mentioned previously report any thefts and if safe to do so, please take a photograph.

A special thanks to Julie who does such a fantastic job looking after the Coronation Garden.

Want to help Locking look Beautiful by volunteering to adopt and look after a flower tub? – please contact the Clerk



Coronation Garden at The Green

OVER-HANGING HEDGES, TREES and SHRUBS

Warmer temperatures and rain showers bring about a growth in shrubs, trees and hedges that can overhang the footpaths and roads causing potential hazards to vehicles, obscuring road signage and causing difficulties for all pedestrians and drivers.

We ask that householders manage garden growth within their boundaries with regular cutbacks for the benefit of public safety.

Overgrown vegetation can be reported to North Somerset Council via their website: www.n-somerset.gov.uk or 01934 888 888

PLEASE PICK UP AFTER YOUR PET



It is important to remember to immediately clean up after your pet. Besides being unsightly and smelly, animal waste

can be hazardous to the health of our children who play in the community and other pets. One of the most common forms of disease transmission between dogs is through faecal matter.

Take along a bag with you to pick up waste and then dispose of it in one of the dog waste bins provided.

By taking a few simple steps to clean up after your pet you can contribute not only to the beautification of our community, but also towards the elimination of one of the most irritating nuisances.

Old Banwell Road Playing Field

The next phase subject to costs and funding will be the resurfacing the rest of the car park, installing knee rails, electric vehicle charging points and new bicycle stands. We will keep you updated as this project progresses.



Activity Trail at Old Banwell Road playing field

ANTI SOCIAL BEHAVIOUR

Graffiti at Old Banwell Road Playing Field

At the beginning of January, the outdoor gym equipment and picnic tables were subjected to graffiti in pink paint. Anyone who recently painted their child's bedroom may recognise the paint colour or the tag from the photos below:



Graffiti on Gym equipment



Locking Village Park

Mini Motor Bike: We have also received reports of a young person riding a mini motorbike in Locking Village Park.

Locking Parish Council do not allow unauthorised motorised vehicles being used in the park.

A description of the motorbike and rider have been reported to the Police.

Thefts from St Augustine's Church Yard

It is with great disappointment and sadness that we report that over the last few months there have been several thefts from the Church Yard at St Augustine's Church.

Christmas wreaths and flower arrangements from graves along with the top from the sundial have been stolen. These have been reported to the Police.

Remember, by working together we can make our community a safer and happier place to live. All information can be reported to the Police on 101 or email the Clerk at clerk@lockingparishcouncil.co.uk. Please ensure you have detailed descriptions or photographs, if safe to do so.

FLY TIPPING

This is becoming a huge problem within the Parish; we have recently had reports of a sofa and cushions being dumped at The Spinney – the offenders dumping this would have had to drive across the footpath at Leafy Way to get onto The Spinney.

Fly tipping is also occurring at the entrance to The Scouts field on Old Banwell Road and the pond at the playing field. If you happen to come across this and it's safe to do so, please make a note of the date and time and if you can please take a photo with vehicle registration and send it to the Clerk who will report these incidents.



Fly Tipping

Let's tackle it together!

Fly tipping – the illegal dumping of waste – can pollute the environment and cost significant amounts of council taxpayers money to clear away.

All householders and businesses have a duty of care for any waste that they produce.

This means that you must dispose of it legally and only use licenced waste carriers. Fly tipping can carry a maximum fine of £50,000 or even more if the case goes to Crown Court a prison sentence of up to five years.

Any waste that you **pay** to have removed from your home is classed as commercial waste and needs to be disposed of accordingly.

When having waste collected from your home or business remember the **S.C.R.A.P rule**.

- **Suspect** – If it doesn't feel right then it probably isn't.
- **Check** – All waste carriers need to be registered with the Environment Agency. If they collect waste for payment, then they need to be registered as a **high tier waste carrier**. Check that they are registered at <https://environment.data.gov.uk/public-register/view/search-waste-carriers-broker>
- **Refuse** – unsolicited offers to take your waste.
- **Ask** – questions as to where they will take your waste.
- **Paperwork** – **ALWAYS** get a receipt from the person collecting your waste including their business details.

If your waste is found fly tipped and you can't provide documentation showing who collected it, you could end up with a fine



**Safer Stronger
North Somerset**



Update from Locking Primary School

It certainly has been a very busy and exciting winter for our Locking family! Some of our highlights have included:

- replacement of main school building roof, down pipes and new signage in the front entrance as well as extensive, much needed drainage works across the site
- improvements to our Forest School area which is now used every week for groups of children well as termly family sessions afterschool
- the DFE (Department for Education) has approved the extension of the age range of our school from 2-11 years and we are now in the final stages of including Locking Preschool into our Locking Primary School family
- Building works for our Treetops MLD Resource Hub start in early March and hope to be completed by mid-June 2024.

We would also like to extend our sincere thanks to the whole Locking community and Locking Parish Council for their ongoing support with our building works, contributions to Christmas food parcels for our families and the significant

improvements to the carpark!

We are looking for **new community governors** to join on our local governing body...please get in touch with us if you think you can help!

FIVE REASONS
why being a Locking Primary School governor is for you!

- Personal & professional development
- Improve children's education & opportunities
- Support school staff
- Sense of achievement in a voluntary role
- Wider academy trust opportunities, training & support

www.locking.n-somerset.sch.uk



Locking Book Exchange at Locking Parish Hall from April is moving to Monday's 12.30pm - 2.30pm

LOVE BOOKS?

This is a free service open to everyone, there is no registration or fee, just bring a book and exchange for one or two you want to read. An easy, fun way to swap books you no longer need





Hello everyone, my name is Steve Hemmett and I am the PCSO for the areas surrounding Locking, Locking Parklands, Hutton, and Bleadon. I wanted to take the time to introduce myself to those who have not yet met me.

To better serve the community, I will now be holding my beat surgery on Monday afternoons between 12:30 and 14:00. The upcoming dates are 18/3/24, 15/4/24, 13/5/24, 10/6/24, 08/07/24, and 05/08/24.

During these surgeries, I will have a variety of literature available to provide crime prevention advice and answer any questions or concerns you may have. Please do not hesitate to attend and utilize these resources.

As the weather continues to improve, I will also be organizing bike marking events, where our team can mark your bikes free of charge. This is a great way to deter thieves and protect your property. With the change in season, unfortunately, comes a rise in anti-social behaviour in our communities. I want to assure you all that I am here to help and support any way that I can.

I am also aware of the recent thefts at St Augustine's Church in Locking and have made it a priority to include this area in my Hi-Viz patrol plan. I have also provided the church with a leaflet to display on their notice board.

As Locking Parklands continues to grow, with an additional 5000 residents over the next few years, it does put a strain on our resources to cover all areas and maintain a visible presence. I apologise if you do not see me around as much as you would like, but please know that I am working hard to keep our community safe.

Finally, I want to encourage everyone to be vigilant and lock any gates or entrances to large open spaces such as car parks and football fields. This is important as it helps prevent illegal encampments from being set up. If you do come across any suspicious activity, please do not hesitate to call 101 as there is a new law that supports landowners in dealing with these situations. Please do not hesitate to approach me with any concerns or issues you may have. Together, we can make our community a safer and better place to live.



Avon and Somerset Police **NEIGHBOURHOOD POLICING**

Talk to us

Join your Neighbourhood Policing Team at

Drop in and speak to PCSO Steve Hemmett, whether you want advice on how to protect your belongings, arrange for free bike security marking, more information about the work we are doing in your area, or you want to raise a concern about an issue in your community.





Time: 12:30PM to 14:00PM Monday

Date: 18/3/24 15/4/24 13/5/24 10/6/24

08/07/24 05/08/24

Location: Locking Village Hall, Grenville Ave,
Locking, Weston-Super-Mare BS24 8AR.

For more information please visit:
www.avonandsomerset.police.uk/your-area

Follow us on    



Parklands Primary

EASTER TRAIL

£2.50
Per Entry



Saturday 23rd March
11am - 3pm



The trail starts at **Parklands Educate Together Primary School** and will take you around Locking Parklands.

Come to the school to pick up your trail sheet and pay your entry fee.



every completed sheet
wins a prize!



There'll be **refreshments*** and a **craft corner**.



All money raised will go to the PSA and will be spent on new equipment for the school for the benefit of all the children.

*If possible we ask that you bring your own travel cups to avoid unnecessary waste.

Get in touch:

parklandsetpsa@gmail.com

Designed by hoycraftcreative.co.uk

Parklands
Educate Together

PSA



PARISH PANTRY



The Parish Pantry at Locking Parish Hall is open to all residents of Locking Parish, on Tuesdays & Thursdays

9.30am-12.30pm

All that we ask is that you

Take What You Need

and

Leave What You Can

Food donations are always very welcome

Donations will also go to Locking Primary School as top up food parcels





info@carleatheatrearts.co.uk

Carlea Theatre Arts provides a wide range of classes that welcome all abilities, from walking through to adults.

All pupils from little stars upwards can perform in our regular shows we produce at the playhouse theatre. Pupils also have the opportunity to take graded examinations with the ISTD as well as medal exams with the UKA. All teachers are highly qualified, DBS checked, first aid and safeguarding trained.

Our current timetable at Locking Parish Hall is as follows:

Monday: 10.00-10.45am Little starlets, from walking-preschool.

5.15-6.00pm Grade 4 Tap

6.00-6.45pm Grade 4 Ballet

6.45-7.15pm Pointe work

7.15-8.00pm Grade 5 Modern

Tuesday: from 6 years upwards

4.30-5.00pm Body conditioning/flexibility

5.00-5.45pm Acro

Wednesday: 6-11 year olds. 4.30-5.15pm

Contemporary dance.

11 years upwards 5.15-6.00pm

contemporary dance.

Saturday: 2.5 years and upwards.

9.15-9.45am Little stars ballet

9.50-10.20am Little stars Tap

10.25-10.55am Little stars Ballet

11.00-11.45am Pre Primary ballet

11.50-12.20pm Pre Primary Tap

12.30-1.15pm Primary Tap

1.15-2.00pm Primary Ballet

2.00-2.30pm Primary Modern



At Locking Parklands Hall: Thursdays

5.00-5.45pm Grade 3 Ballet

5.45-6.30pm Grade 4 Modern

6.30-7.15pm Grade 3 Tap

7.20-8.05pm Adult Tap

8.05-8.50pm Adult Jazz

Saturdays

9.30-10.15am Grade 1 Ballet

10.15-11.00am Grade 1 Tap

11.00-11.45am Grade 2 Modern

11.50-12.35pm Grade 2 Ballet

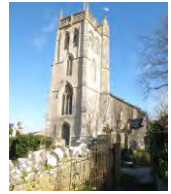
12.35-1.20pm Grade 2 Tap

1.20-2.05pm Grade 3 Modern

Full timetable of classes is on our website: www.carleatheatrearts.co.uk

St AUGUSTINE'S CHURCH LOCKING

News from your Parish Church



Hello. I wrote last year concerning the change of leadership at St Augustine's church with the Rev Anne Wilkins having moved to another parish. The church is in good heart and coping well with our regular services including weddings and funerals. The system for replacing a vicar is a lengthy process but we are making progress. The post is being advertised in March, interviews are planned in April and we hope our new vicar will arrive later this summer.

St Augustine's church



Rev Hobden

In the meantime, we are still here to serve Locking and are delighted to meet with many of you now coming to our monthly Community Café on 4th Saturday mornings. Children are very welcome with special tables for them with things to make. The choice of cakes to have with your coffee is very tempting.

We would love to welcome you to any of our services or activities. In a world full of bad news we continue to have hope in the good news of God's love. Our 10am 'Church in the Centre' on 4th Sunday mornings are informal gatherings for family fellowship, worship, music and songs in Locking Church Centre.

Rev Geoff Hobden

Contact Corriene in the church office for help, information and if you would like to receive our monthly 'Stay Connected' newsletter.

Church Office: 01934 822857 (Open Tues, Wed, & Fri 9.00am -12.00midday)

Email: huttonandlocking@gmail.com St Augustine's

website: www.staugustineslocking.org.uk for news, services and activities



Open Church

Visit your Parish Church

St Augustine's Church in Locking is Open for Visitors 10am-5pm Wednesdays & Saturdays April to October for Peace, Quiet and Prayer



Includes Local History displays of
Locking Village History
Locking Church
RAF Locking
Locking Airfield



St Augustine's Locking Church Services March to June 2024

March Services

Sunday 3rd Mar - 10am Morning Service
 Sunday 10th Mar - 10am Mothering Sunday
 Sunday 17th Mar - 10am Holy Communion
 Sunday 24th Mar - 10am 'Church in the Centre'
 Sunday 31st Mar - 10am Easter Holy Communion

April Services

Sunday 7th Apr - 10am Morning Service
 Sunday 14th Apr - 10am Holy Communion
 Sunday 21st Apr - 10am Morning Service
 Sunday 28th Apr - 10am 'Church the Centre'

May Services

Sunday 5th May - 10am Morning Service
 Sunday 12th May - 10am Holy Communion
 Sunday 19th May - 10am Morning Service
 Sunday 26th May - 10am 'Church in the Centre'

June Services

Sunday 2nd Jun - 10am Morning Service
 Sunday 9th Jun - 10am Holy Communion
 Sunday 16th Jun - 10am Morning Service
 Sunday 23rd Jun - 10am 'Church the Centre'
 Sunday 30th Jun - 10am Joint Service with Hutton

Easter at St. Augustine's Locking



Palm Sunday 24th March
10am 'Church in the Centre'



Good Friday 29th March
2.00pm - 3.00 pm 'At the Cross'
in St Mary's Church Hutton

Easter Sunday 31st March
10am Holy Communion
in Locking



Flowerdown Tots



Flowerdown Tots is a playgroup for 0-5 and their parents/carers based in Locking Parish Hall Friday mornings during term time.

We have seen some changes as we have changed into the new year. One of our dedicated founders, Jo, has recently taken up a new job which unfortunately means that she can no longer continue to run the group.

However, we are lucky to have another wonderful individual, Emma, who has stepped up to continue running the group at a slightly later time of 10 – 11.30am.

Despite these changes, there continues to be plenty of fun, laughter, toys, tea, cake, and mess! Its always better when the mess isn't in your own home.

So why not come and join us and share the woes and the joys of raising children with other adults who are in the same boat.

If you have any questions or would like more information, please do not hesitate to contact Emma on 07887583156.

We look forward to welcoming you and your little ones to Flowerdown Tots.



PARKLANDS SINGERS



We are a group of adults who enjoy singing together, having fun and making new friends. We sing for pleasure, choosing a range of familiar songs we enjoy. You do not need to be able to read music and we welcome all singing abilities.

Our musical director, Lucy Rush, leads us and helps us to sound the best we can in a 'no pressure' style. Occasionally, we also enjoy leading 'singalong sessions' for groups of people who want to join in and sing with us.

We meet on the first Wednesday of every month at The Radio Wing, McCrae Road, Locking Parklands from 7.30 – 9.15 pm. There is a small charge (£4.50) to cover costs, including light refreshments. Your first visit will be free, to give you a chance to come and see what we do with no obligation.

We laugh a lot, talk together and make new friends. Do come along, we'd love to see you.

Here are the dates of our next few sessions:

Wednesday 3 April, Wednesday 1 May, Wednesday 5 June, Wednesday 3 July.

For more information, contact Christine Hall, 01934 827686,

chris.rushall@gmail.co.uk

ACCESS TO YOGA



Just over 2 years ago Haze brought chair-based yoga to Locking. Numbers were low to begin with but once a few more experienced the classes, people brought friends and the numbers grew to the point where there is now a reserve list.

Members have surprised themselves at the progress they have made with their balance – so important as we age to help prevent falls. There is a great atmosphere which begins as people are welcomed in with a tea or coffee.



If you are interested in having your name on the reserve list, please get in touch with Haze on 07980 697145 or haze@accesstoyoga.co.uk

Men's Breakfast

**10am Saturday 13th April
in Locking Church Centre
Social gathering for Men with
Full Cooked Breakfast! All welcome**



BOOGIE BEAT MUSICAL MOVEMENT

Boogie Beat music and movement classes are great fun for little ones, based on traditional nursery rhymes and classical fairy tales combined with a lively and active dance twist! Themes include: The Beautiful Swan, Jack & the Beanstalk, Pirates and Princesses and much more!

Naomi Hansford 07899 677770

naomi.hansford@boogiebeat.co.uk



BIRTHDAY PARTIES – NURSERY & SCHOOL WORKSHOPS

Monday – 11.00 -11.45am – Worle community centre mixed age

Tuesday – 9.30-10.15am - East Huntspill mixed age

Wednesday – 9.30-10.30am - Locking mixed age

Thursday – 9.30-10.15am - East Brent mixed age

10.30-11.15am - East Brent Baby class

Friday – 12.45-1.30pm - Uphill baby class

2.00-2.45pm - Uphill mixed age clas

CRAFT CLUB



We are a friendly group of ladies who enjoy a natter while crafting. We meet on Monday mornings during term-time from 10.00am – 12 noon in St Augustine's Church Centre.



We do various crafts including card making, pergamano, knitting, embroidery, and also have regular craft demonstrations which could introduce you to new crafts.



We welcome new members. Please bring your own craft to start with. The cost is £2 per session to include tea/coffee and biscuits.



For more information please call Eileen Begent on 01934 822050 or email eileen@begent.org

BUBBLING SPRINGS TAI CHI AND QIGONG

2024 is a very special year for our instructor Cheryl, marking 25 years 'in the job'. During that time Cheryl has trained with experts in the field, both in the UK and China. Learners have come and gone but some have remained for over 20 years, enjoying health improvements, reduced anxiety and making new friends.

TAI CHI CHUAN?

Translating as 'Supreme Ultimate Fist', Tai Chi Chuan is what is known as an 'internal' martial art. It began as a fighting art, several hundred years ago, but these days it is practised more for its many health benefits. Tai Chi Form is a sequence of slow, spiralling, flowing movements. It is sometimes referred to as 'meditation in movement'. [WHAT IS QIGONG](#)

Translating as "Energy Work", Qigong is a branch of Traditional Chinese Medicine and is one of the oldest exercises in Chinese history. The exercises are designed to increase, redistribute and balance the energies of the body, thus improving body condition as a whole.

People of all ages and abilities can practise these Arts. No specific skills are necessary, just an open mind and a will to learn. From gentle exercise – to a holistic experience, they integrate mind, body and spirit.

Classes are held Locking Parish Hall, Wednesdays 1.30-3pm

Contact Cheryl on 01278 78544 or 07840 350334

Email: bubbingsprings@hotmail.com

'Whoever practises Tai Chi correctly will gain the pliability of a child, the strength of a lumberjack and the peace of mind of a sage'.



Tai Chi in action

LITTLE ARK TODDLERS

We are a very friendly group of parents, grandparents and carers who meet every Wednesday at 10.30am to 12.30pm in St Augustine's Church Centre during term time. All children are welcome from birth to school age.

We have a large variety of toys including a slide, happy land, play dough, play kitchen, and much, much more.

Every week we have a different craft activity.

We charge £2 per family which includes tea, coffee, squash and biscuits.

(Cost covers adult and 2 children, each additional child charged at £1 extra)

So why not give us a try and join in the fun!!!! **For further information please contact Gail – 07818 677635 or see our Facebook Page “Little Ark Toddlers”**



U3A MUSIC GROUP

U3A Music Group meet every Tuesday
1.45pm-4.15pm in Locking Parish Hall,
Grenville Avenue, Locking.

So please come along and give it a try.

All Welcome - Especially Beginners

Contact : Derek 01934 823342 or
Rod 01934 518898 07949 476417

U3A has 800 members in Weston-Super-Mare and holds
80 different groups including: table tennis, knitting,
book club and French.



Locking Senior Club

In November we had a visit from Parklands Singers with a 'Singalong session'. What a delightful group of people, we had such a wonderful afternoon and we shall be inviting them for a returning visit later in the year.

December, we held our annual Christmas lunch at the Beachlands Hotel, lovely food and excellent company.

We meet in St. Augustine's Church Centre, fortnightly on Wednesday afternoon, 2pm- 4pm.

Dates of our meetings:

March 6th. 20th.

April 3rd. 17th.

May 1st. 15th. 29th.

June 12th. 26th.

July 10th. 24th.



If you would like to come along and try us out, you will be made most welcome. For more information, please contact Anthea Raines on 01934 820255.

COMMUNITY CAFÉ



Locking Church Centre, 10am – 12.30pm
Meet - Chat - Charity Stalls - Cakes - Teas
with Children's activities



Monthly on
Saturday 23rd March
Saturday 27th April
Saturday 25th May
Saturday 22nd June

For details tel.: 01934 822857 or email huttonandlocking@gmail.com
Contact us if you would like a stall for your chosen charity

THE HELICOPTER MUSEUM

Volunteers Required

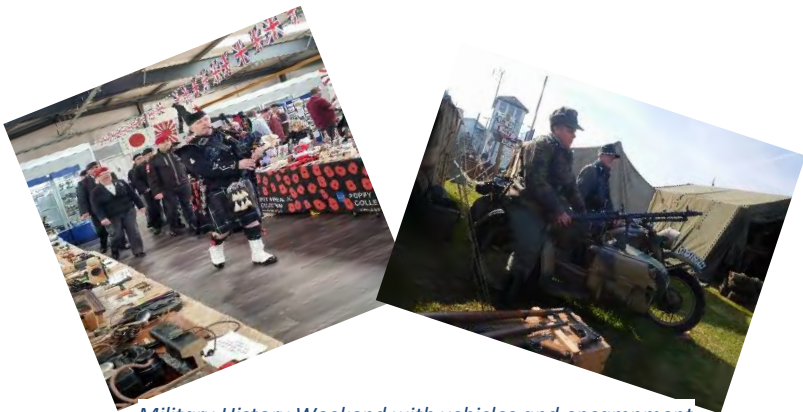
The Helicopter Museum in Locking is currently on the lookout for Volunteers for its Shop, Cafe and for Tour Guides / Marshalls. If you have a morning or afternoon free each week then your local charity would love to hear from you.

Please call Jess on 01934 635227 for details.

The Helicopter Museum, Locking Moor Road,
Registered Charity Number 281053

We have lots of exciting events taking place at The Helicopter Museum this year so please pop the dates of the following in your diary, there really is something for everyone

- Apr 20th & 21st** **Military History Weekend with Vehicles and Encampment**
- June 23rd** **Dalek Invasion Day**
- June 30th** **American Themed Open Cockpit Day**
- July 14th** **The North Somerset Scale Model Show**
- July 27th & 28th** **Dinosaur Weekend**
- Aug 18th** **World Helicopter Day and Classic Bus Rally**
- Sept 22nd** **Vintage Wheels Rally**
- Oct 27th** **Halloween Fun Day with Live Giant Bubble Shows.**
- Dec 8th** **Christmas Themed Family Fun Day**



Military History Weekend with vehicles and encampment

The total that was collected for the Poppy Appeal was £23,009 an increase from £18700 in 2022. The Poppy Appeal Organiser (Norman Poole) would like to say thank you to all the people who gave up their time to collect, helped to distribute/collect the poppy boxes. A great effort by everyone.

One of the collectors (Jim Spence) was spotted in Waitrose dressed as Air Chief Marshall Dowding.

Air Chief Marshall Hugh Caswell Tremenheere Dowding began his military career in the artillery but in 1913 he took the opportunity to fly at Brooklands and gained his RFC wings. Dowding is regarded as the architect of victory in the Battle of Britain. playing a crucial role in Britain's defence and the defeat of Operation Sea Lion, Adolf Hitler's plan to invade Britain.



Mr Spence dressed as Air Chief Marshall Dowding

The Branch is always looking to welcome new members (ex-service and non-service people). We meet at Hutton Village Hall where we hold social events as well as Branch meetings.

DATES FOR THE DIARY: Hutton Village Hall

Tuesday 14th May – Bingo

Saturday 8th June – 80th D-Day Celebration – Cream Tea (14:00 – 16:00)

Tuesday 10th September – Ploughman Supper

Meetings are held in Hutton Village Hall at 19:30

For further information please contact Lin on 07814522460 Email secretary.rbl.hol@outlook.com



Girlguiding

Volunteer with us

'I enjoy it so much. The girls are lovely and I feel I'm doing something worthwhile. It's amazing!'
Tayba, leader



We open up a world of possibilities to girls from 4 to 18 - one where **they can do anything**. We're the UK's largest youth organisation dedicated completely to girls.

It's totally flexible. Any help you can give will make a big difference. There's no commitment too small. You can volunteer in a group or use your skills behind the scenes. You don't need any guiding experience to join.

For more info email [Chloe Poole](mailto:Chloe.Poole@girlguidingwsm.org.uk) or Westonmendip@girlguidingwsm.org.uk
girlguiding.org.uk/volunteer

We meet

in: Locking, Bleadon and Hutton

on: Mondays and Tuesdays

at: Time varies if Rainbows, Brownies, Guides or rangers

BRIDGE ARCHITECTS / ALPINE PHOTOGRAPHY



ST AUGUSTINE'S COMMUNITY LOUNGE IS STAYING OPEN!

ST AUGUSTINE'S CHURCH CENTRE COMMUNITY LOUNGE

Open every Tuesday 2pm-4pm

For further details contact: tel.: 01934 822857 or email huttonandlocking@gmail.com



REPORTING ISSUES AND PROBLEMS

Resident Parishioners are encouraged to report issues themselves to various organisations. The Clerk & Parish Council do try to deal with reported concerns within the resources available. Please use the chart below to find the right contact to report a concern.

Thank you.

<u>WHAT IS THE ISSUE</u>	<u>WHO DEALS WITH IT?</u>	<u>WHO DEALS WITH IT?</u>
<p>Fly Tipping; Flooding; Pot holes; Street Lighting (other than the 21 PC-owned lamps) Missed recycling/NS Waste; Dog fouling on pavements; overgrown hedges that obstruct footpaths & roads</p>	<p>NORTH SOMERSET COUNCIL</p>	<p>01934 888 888 www.n-somerset.gov.uk</p>
<p>Anti-Social Behaviour Cold calling; Suspected phone scam; parking issues; Speeding</p>	<p>POLICE</p>	<p>101 999 (IN AN EMERGENCY)</p>
<p>Locking Parklands Residents can also contact Priem Ltd for any of the following: Fly Tipping; Flooding; Potholes Dog Fouling on pavements, overgrown hedges that obstruct footpaths or roads</p>	<p>PRIEM Ltd</p>	<p>Regional Customer Support Team via email using helpdesk@Preim.co.uk 24/7 Helpline 01778 382210</p>
<p>Locking Village: 26 PC owned street lights, dog bins, litter bins, street furniture, Parish Hall, Park, Allotments, open spaces</p>	<p>LOCKING PARISH COUNCIL</p>	<p>01934 820786</p>

THE PARISH CLERK - Mrs D Tremlett

The Parish Hall Grenville Avenue Locking

BS24 8AR

01934 820 786

Email: clerk@lockingparishcouncil.co.uk

*Please contact the Clerk on enquiries or concerns regarding the Parish
-she will be happy to help you.*

Your COUNCILLORS

ClIr Paul Jones	Chairman	0792 8680 464
ClIr Elfan Ap Rees		01934 822 524
ClIr Peter Lacey		01934 822660
ClIr Carl Prosser		07799 607748
ClIr Wendy Ashdown		07983 573766
ClIr Bill Bearsby		01934 823144
ClIr Mike Tremlett	Vice-Chairman	0743 5969 050
ClIr Lisa Clark		07872 498398
ClIr Justine Carter		07891 499983
ClIr Ian Hilder		07724 996269
ClIr Paul Schofield		07517 500567

Published by Locking Parish Council, The Parish Hall, Locking

Tel: 01934 820786

Email: clerk@lockingparishcouncil.co.uk

Any views expressed by contributors to 'Looking at Locking' are not necessarily the views of the Parish Council nor are they endorsed by the Council.

[Follow Locking Parish Council on Facebook](#)

[Our Newsletter is now available to view online on our website:](#)

www.lockingpc.co.uk